

# THE STIRLING

4002

ELEV. A - 3,656 SQ.FT.  
INCL. 912 SQ.FT. OF OPTIONAL  
FINISHED LOWER LEVEL

ELEV. B - 3,652 SQ.FT.  
INCL. 912 SQ.FT. OF OPTIONAL  
FINISHED LOWER LEVEL



Elev. A



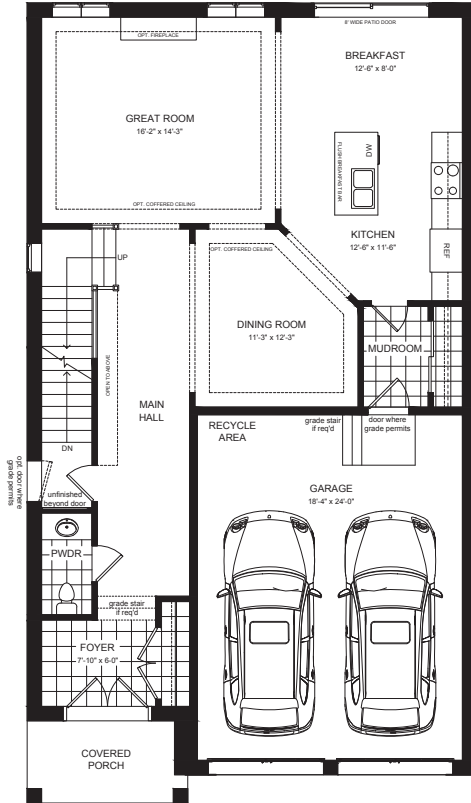
Elev. B

# THE STIRLING

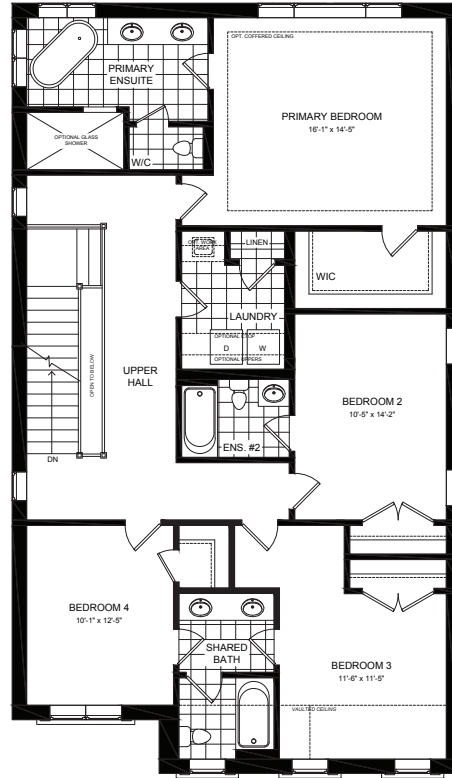
4002

ELEV. A - 3,656 SQ.FT.  
INCL. 912 SQ.FT. OF OPTIONAL  
FINISHED LOWER LEVEL

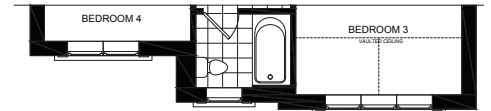
ELEV. B - 3,652 SQ.FT.  
INCL. 912 SQ.FT. OF OPTIONAL  
FINISHED LOWER LEVEL



MAIN FLOOR ELEV. A



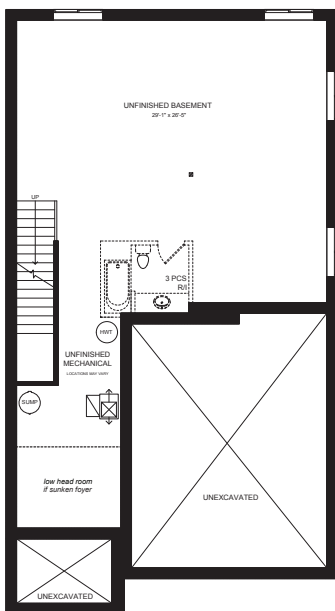
SECOND FLOOR ELEV. A



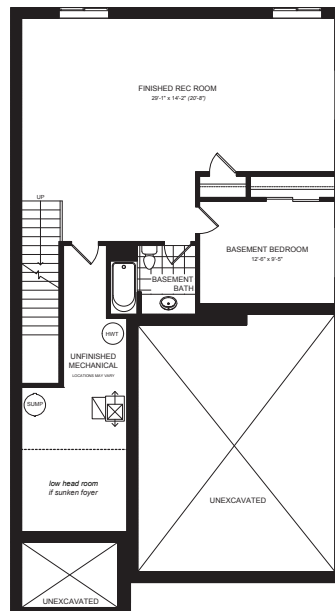
PART. SECOND FLOOR  
ELEV. B



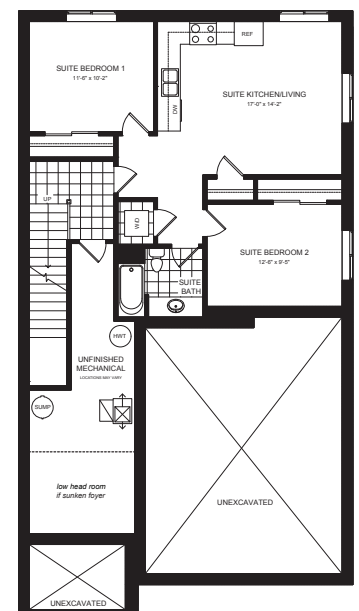
PART. MAIN FLOOR  
ELEV. B



UNFINISHED BASEMENT



OPT. FINISHED BASEMENT  
912 SQ.FT.



OPT. MULTI GEN BASEMENT  
912 SQ.FT.

Actual usable floor space may vary from the stated floor area. Plans and elevations are artist's renderings and may contain options which are not standard on all models. Dunsire Homes Inc reserves the right to make changes to these floorplans, specifications, dimensions, and elevations without prior notice and without compensation. Stated dimensions and square footages are approximate and should not be used as representation of the home's usable floor space or actual size.

Any square footage of a single-family home or a multi-family home that is stated herein is approximate only, may vary from time to time, and remains subject to change without notice or compensation.