

# THE MONTROSE

4003

ELEV. A - 3,723 SQ.FT.  
INCL. 963 SQ.FT. OF OPTIONAL  
FINISHED LOWER LEVEL

ELEV. B - 3,723 SQ.FT.  
INCL. 963 SQ.FT. OF OPTIONAL  
FINISHED LOWER LEVEL



Elev. A



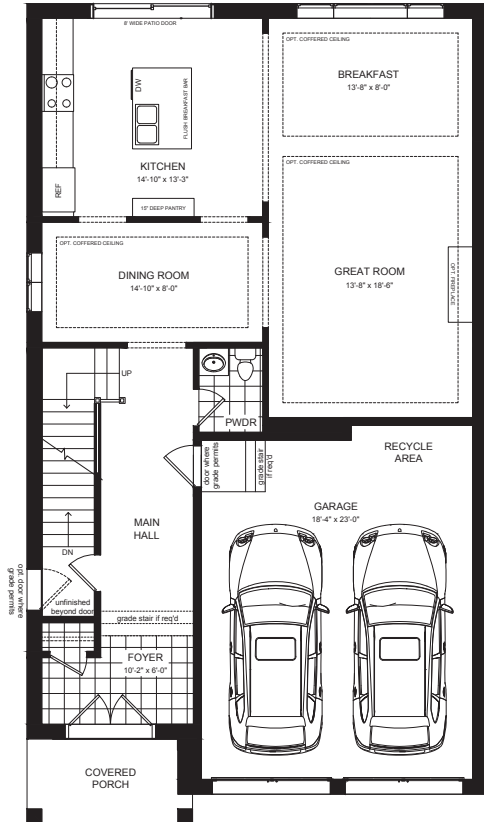
Elev. B

# THE MONTROSE

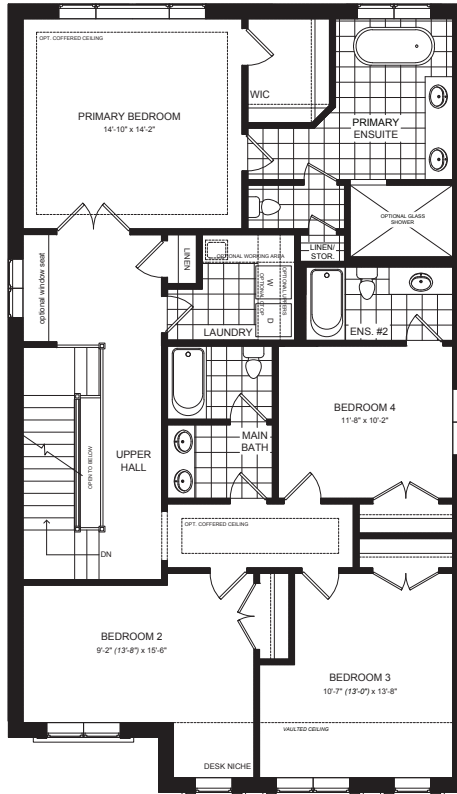
4003

ELEV. A - 3,723 SQ.FT.  
INCL. 963 SQ.FT. OF OPTIONAL  
FINISHED LOWER LEVEL

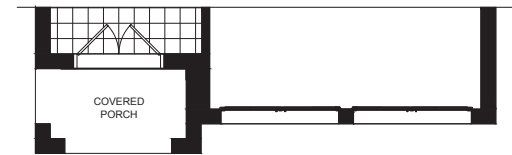
ELEV. B - 3,723 SQ.FT.  
INCL. 963 SQ.FT. OF OPTIONAL  
FINISHED LOWER LEVEL



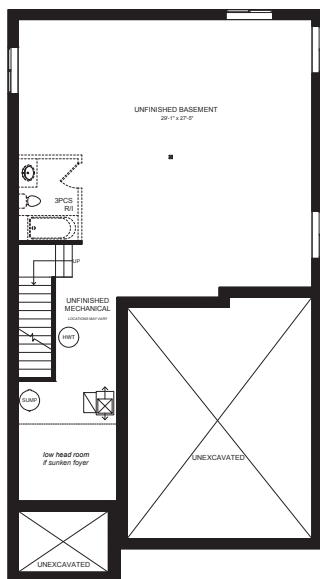
MAIN FLOOR ELEV. A



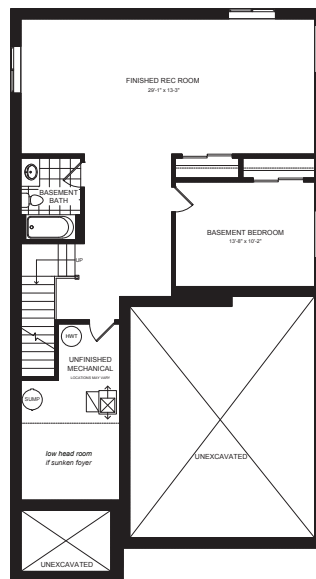
SECOND FLOOR ELEV. A



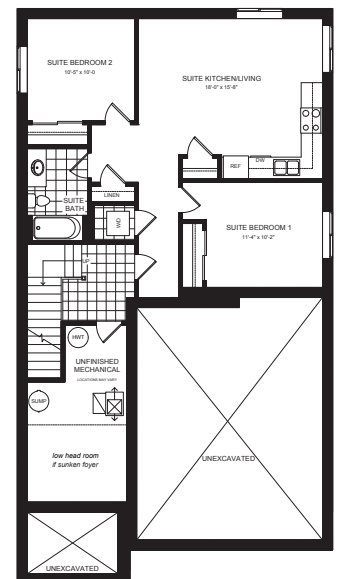
PART. MAIN FLOOR  
ELEV. B



UNFINISHED BASEMENT



OPT. FINISHED BASEMENT  
963 SQ.FT.



OPT. MULTI GEN BASEMENT  
963 SQ.FT.

Actual usable floor space may vary from the stated floor area. Plans and elevations are artist's renderings and may contain options which are not standard on all models. Dunsire Homes Inc reserves the right to make changes to these floorplans, specifications, dimensions, and elevations without prior notice and without compensation. Stated dimensions and square footages are approximate and should not be used as representation of the home's usable floor space or actual size.

Any square footage of a single-family home or a multi-family home that is stated herein is approximate only, may vary from time to time, and remains subject to change without notice or compensation.