



MEADOW
HEIGHTS
PORT COLBORNE

PRIMROSE



ELEVATION A



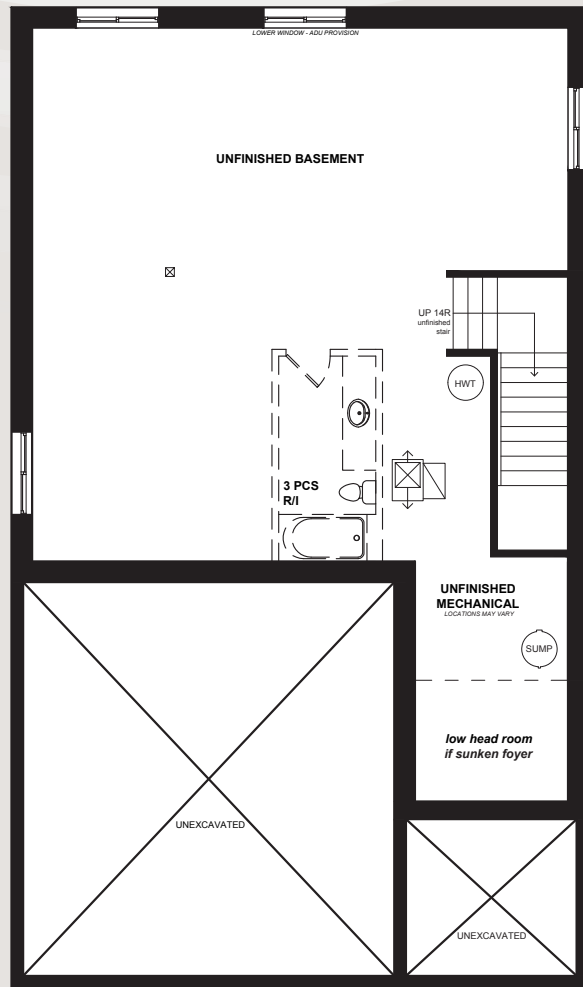
ELEVATION B

ELEVATION C

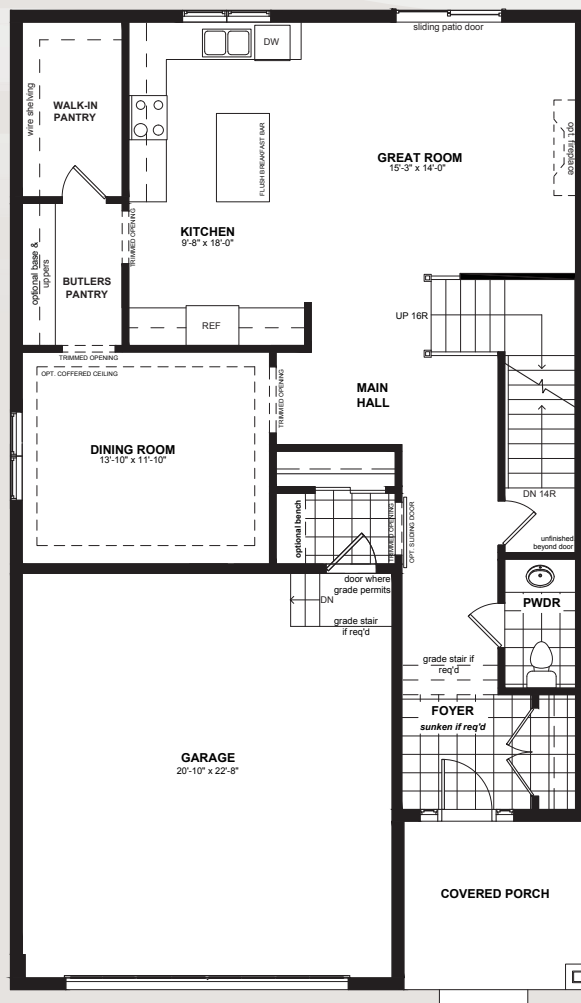
Actual usable floor space may vary from the stated floor area. Plans and elevations are artist's renderings and may contain options which are not standard on all models. Dunsire Homes Inc reserves the right to make changes to these floorplans, specifications, dimensions and elevations without prior notice and without compensation. Stated dimensions and square footages are approximate and should not be used as representation of the home's usable floor space or actual size. Any square footage of a single-family home or a multi-family home that is stated herein is approximate only, may vary from time to time, and remains subject to change without notice or compensation.

 **DUNSIRE** | EST. 2010
DEVELOPMENTS

www.Dunsire.com

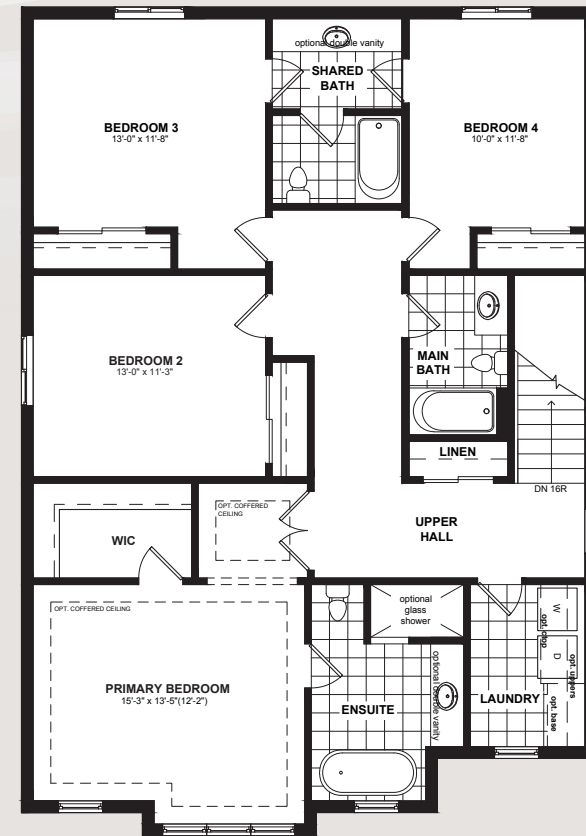


UNFINISHED BASEMENT



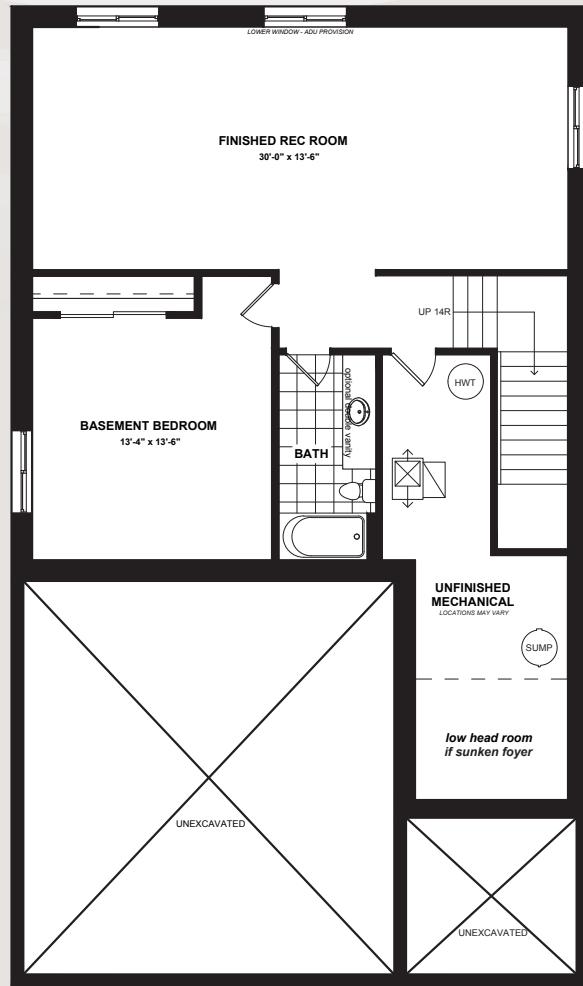
MAIN FLOOR

1,180 SQ.FT



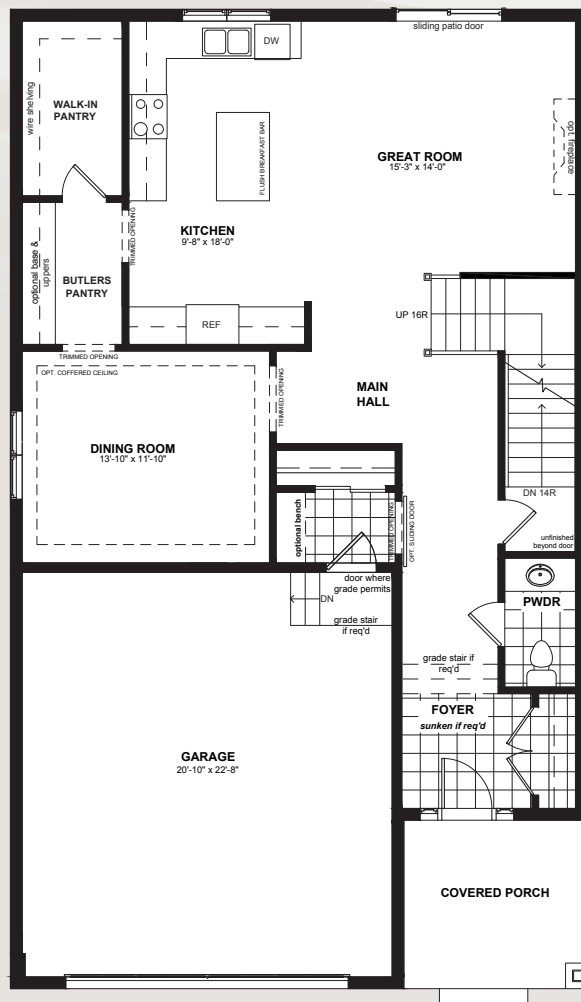
SECOND FLOOR

1,480 SQ.FT



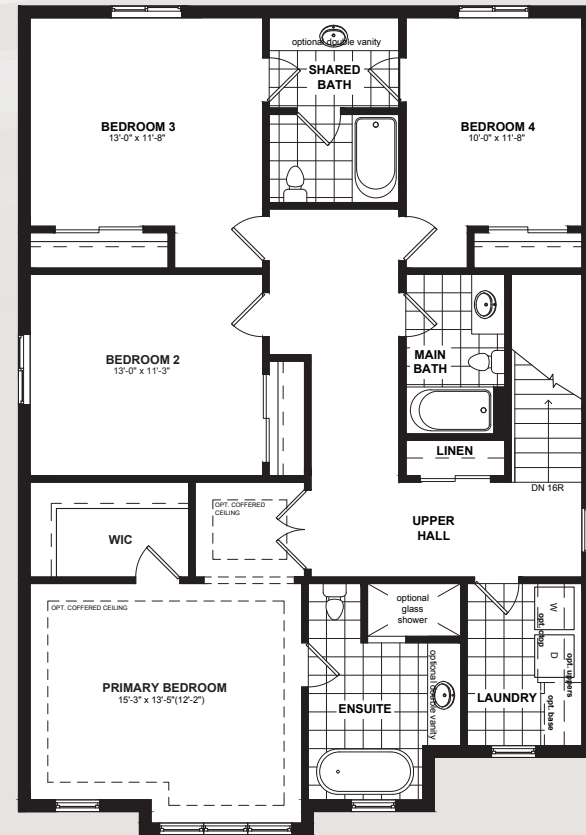
FINISHED BASEMENT

1,228 SQ.FT



MAIN FLOOR

1,180 SQ.FT



SECOND FLOOR

1,480 SQ.FT



PRIMROSE


5 Bedrooms
(4+1)

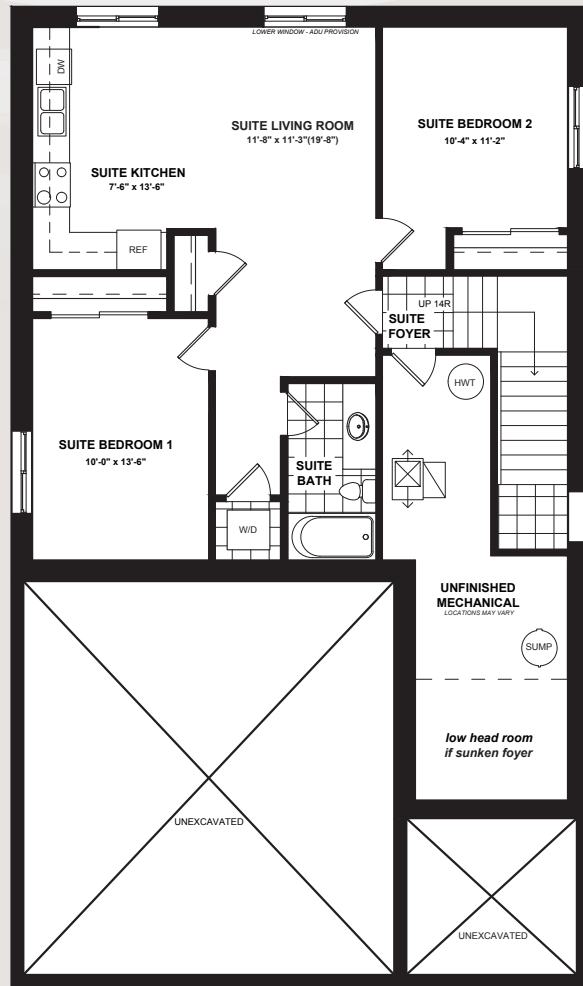

4.5 Bathrooms
(3.5+1)


3,888 Sq.Ft.
(2,660+1,228)

Actual usable floor space may vary from the stated floor area. Plans and elevations are artist's renderings and may contain options which are not standard on all models. Dunsire Homes Inc reserves the right to make changes to these floorplans, specifications, dimensions and elevations without prior notice and without compensation. Stated dimensions and square footages are approximate and should not be used as representation of the home's usable floor space or actual size. Any square footage of a single-family home or a multi-family home that is stated herein is approximate only, may vary from time to time, and remains subject to change without notice or compensation.

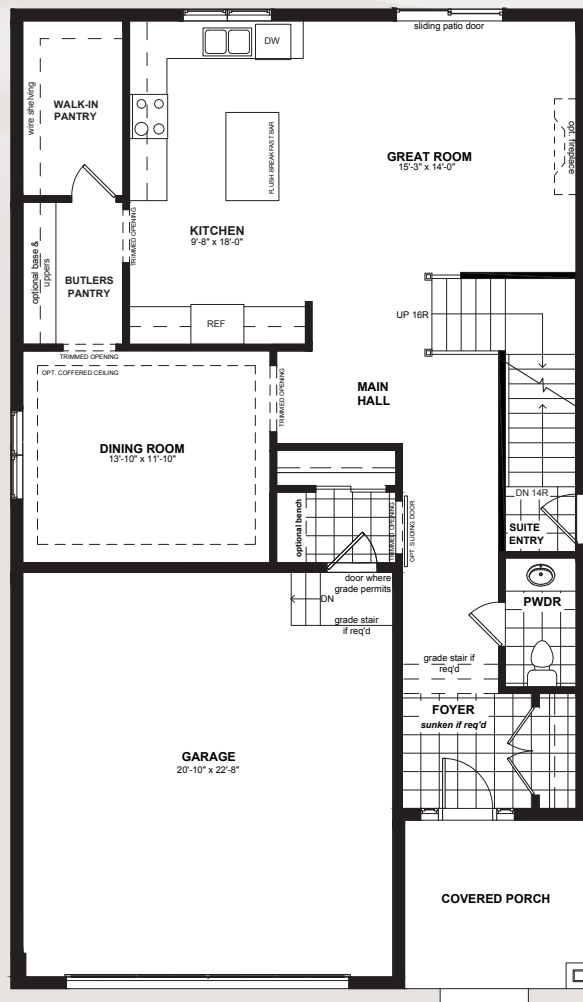


www.Dunsire.com



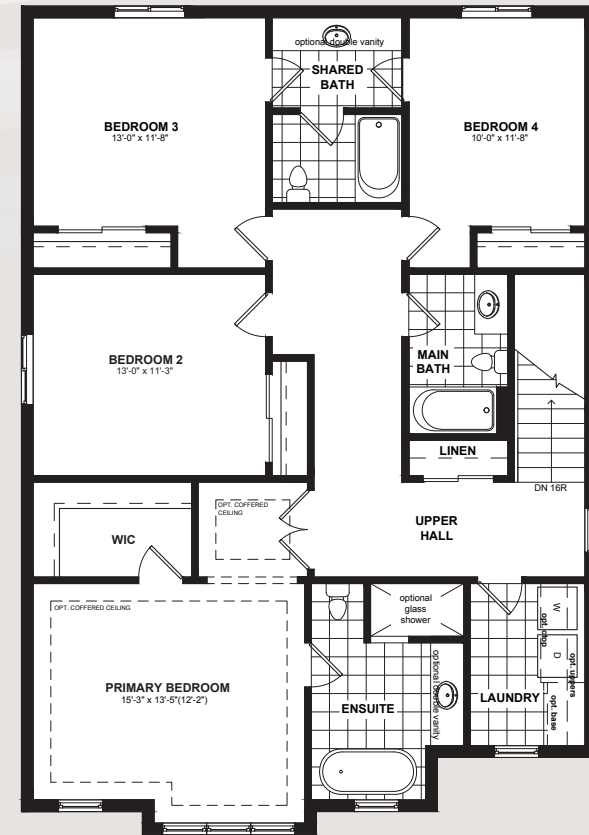
SECONDARY SUITE

1,228 SQ.FT



MAIN FLOOR

1,180 SQ.FT



SECOND FLOOR

1,480 SQ.FT



PRIMROSE

6 Bedrooms
(4+2)

4.5 Bathrooms
(3.5+1)

3,888 Sq.Ft.
(2,660+1,228)

Actual usable floor space may vary from the stated floor area. Plans and elevations are artist's renderings and may contain options which are not standard on all models. Dunsire Homes Inc reserves the right to make changes to these floorplans, specifications, dimensions and elevations without prior notice and without compensation. Stated dimensions and square footages are approximate and should not be used as representation of the home's usable floor space or actual size. Any square footage of a single-family home or a multi-family home that is stated herein is approximate only, may vary from time to time, and remains subject to change without notice or compensation.



www.Dunsire.com