



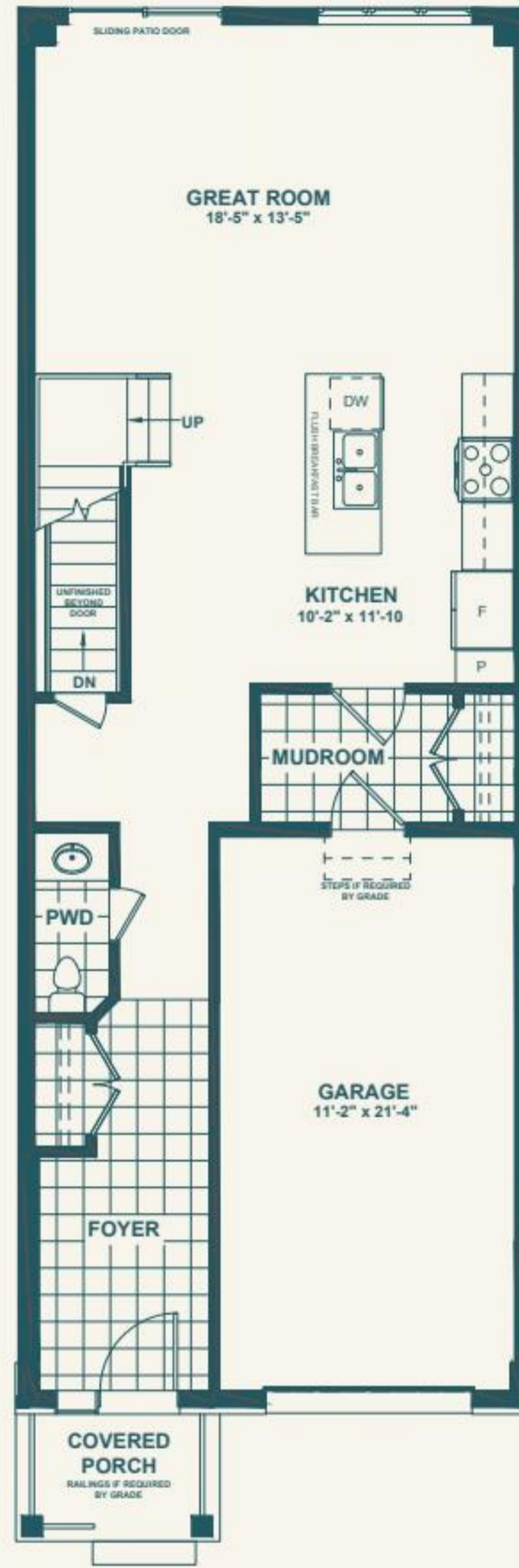
ELEVATION A



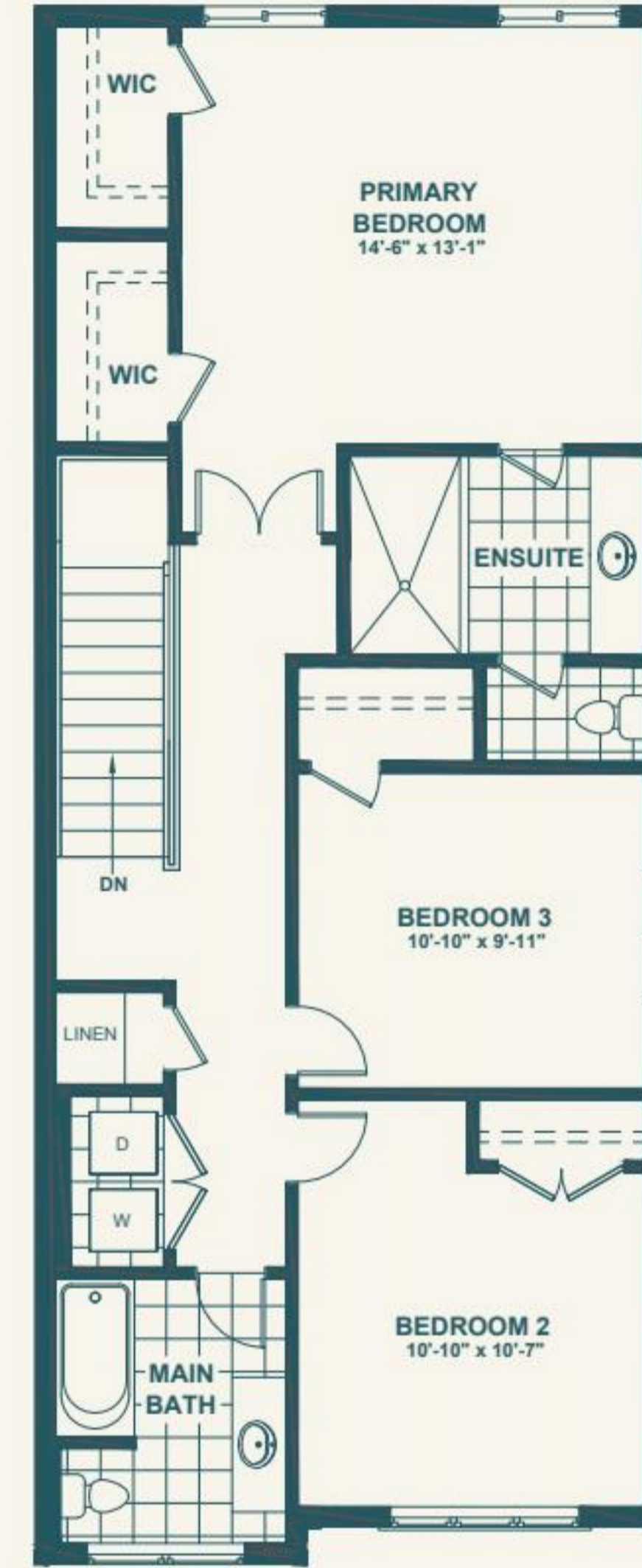
ELEVATION B



BASEMENT



MAIN FLOOR



SECOND FLOOR

BROMLEY GARDENS

PORT WELLER

THE HAMPTON



3 Bedrooms



2.5 Bathrooms



Main: 802 Sq. Ft.
 Second: 969 Sq. Ft.
 Total: 1,771 Sq. Ft.

*Actual usable floor space may vary from the stated floor area. Plans and elevations are artist's renderings and may contain options which are not standard on all models. Dunsire Homes Inc reserves the right to make changes to these floorplans, specifications, dimensions and elevations without prior notice and without compensation. Stated dimensions and square footages are approximate and should not be used as representation of the home's usable floor space or actual size. Any square footage of a single-family home or a multi-family home that is stated herein is approximate only, may vary from time to time, and remains subject to change without notice or compensation.