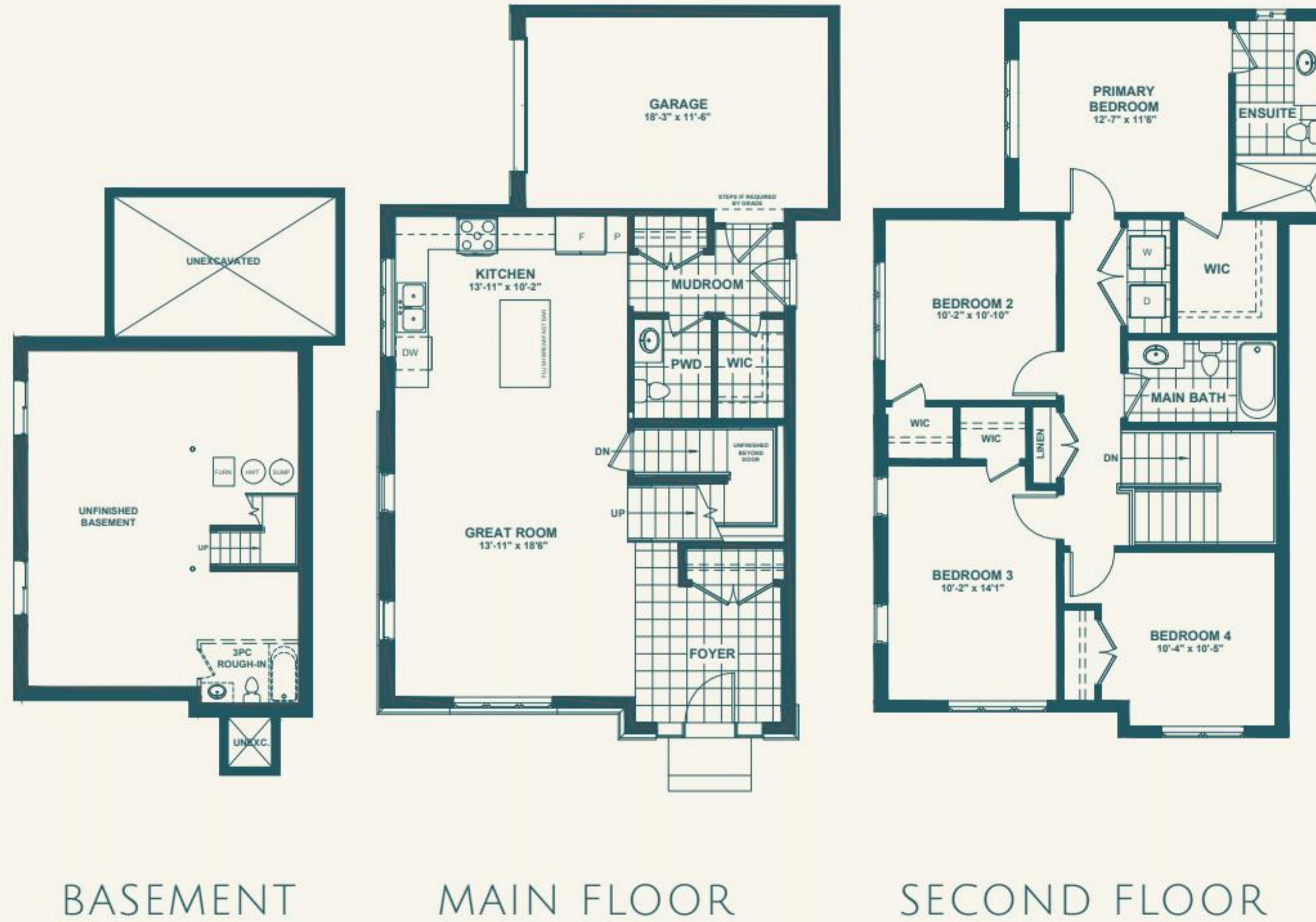




FRONT ELEVATION



SIDE ELEVATION



BASEMENT

MAIN FLOOR

SECOND FLOOR

BROMLEY GARDENS

PORT WELLER

THE CARSON CORNER



4 Bedrooms



2.5 Bathrooms



Main: 766 Sq. Ft.
 Second: 1,020 Sq. Ft.
 Total: 1,786 Sq. Ft.

*Actual usable floor space may vary from the stated floor area. Plans and elevations are artist's renderings and may contain options which are not standard on all models. Dunsire Homes Inc reserves the right to make changes to these floorplans, specifications, dimensions and elevations without prior notice and without compensation. Stated dimensions and square footages are approximate and should not be used as representation of the home's usable floor space or actual size. Any square footage of a single-family home or a multi-family home that is stated herein is approximate only, may vary from time to time, and remains subject to change without notice or compensation.